

***Crassula helmsii* in the New Forest**

Annex report

**Final report on the status, spread and impact
of this non-native invasive plant, and the
efficacy of control techniques following a
3-year trial**



**Prepared by Freshwater Habitats Trust for the New Forest Non-
Native Plants Project on behalf of Hampshire and Isle of Wight
Wildlife Trust**

N.C. Ewald

November 2014

For further information please contact:

Freshwater Habitats Trust
Bury Knowle House
Headington
Oxford OX3 9HY

Annex report:

This is the annex report to, Ewald, N.C. (2014) *Crassula helmsii* in the New Forest. Final report on the status, spread and impact of this non-native invasive plant, and the efficacy of control techniques following a 3 year trial. Prepared on behalf of the New Forest Non-Native Plants Project. Freshwater Habitats Trust, Oxford.

Contents

Appendix 1: Sites for survey 2014	1
1.1 Sites per treatment group	1
1.2 Distribution map	2
Appendix 2: Photographic record of sites August 2014	3
2.1 Abbots Well (large pond)	3
2.2 Beaulieu Heath (west of road)	3
2.3 Blackwell Common	4
2.4 Hill Top – Royal Oak.....	4
2.5 Mogshade Hill (small pond)	5
2.6 Beaulieu Heath (east).....	5
2.7 East End (west of road)	6
2.8 East End (east of road)	6
2.9 Canadian war memorial	7
2.10 Wootton woodland pond	7
2.11 Waterslade Farm	8
2.12 Mogshade Hill	8
2.13 Ipley	9
2.14 Wootton drinking pond	9
2.15 Wootton (large pond).....	10
2.16 Long Pond	10
2.17 Holmsley	11
2.18 Beaulieu Heath (big pond).....	11
2.19 Abbots Well (small pond)	12
2.20 Ocknell (large pond)	12
2.21 Ocknell (small pond).....	13
Appendix 3: Plant records.....	14
3.1 Hot Foam Treatment.....	14
3.2 Herbicide Treatment	16
3.3 Dye Treatment	18
3.4 Control Sites	20
Appendix 4: Macroinvertebrate records	22
4.1 Hot Foam and Herbicide Treatment	22
4.2 Dye Treatment	24
4.3 Control Sites	26

Appendix 1: Sites for survey 2014

1.1 Sites per treatment group

Organic Hot Foam Sites

1. Abbot's Well (big pond)	SU 17772 12882
2. Beaulieu Heath (west of road)	SU 40545 05395
3. Blackwell Common	SU 43577 01537
4. Hill Top – Royal Oak	SU 40204 03137
5. Mogshade Hill – small pond	SU 23933 09684

Herbicide Sites

1. Beaulieu Heath (east of road)	SU 40690 05410
2. East End – east of road	SZ 36817 97949
3. East End – west of road	SZ 36795 97880
4. Mogshade (Canadian war memorial pond)	SU 24139 09575
5. Wootton Woodland Pond	SZ 23609 98744

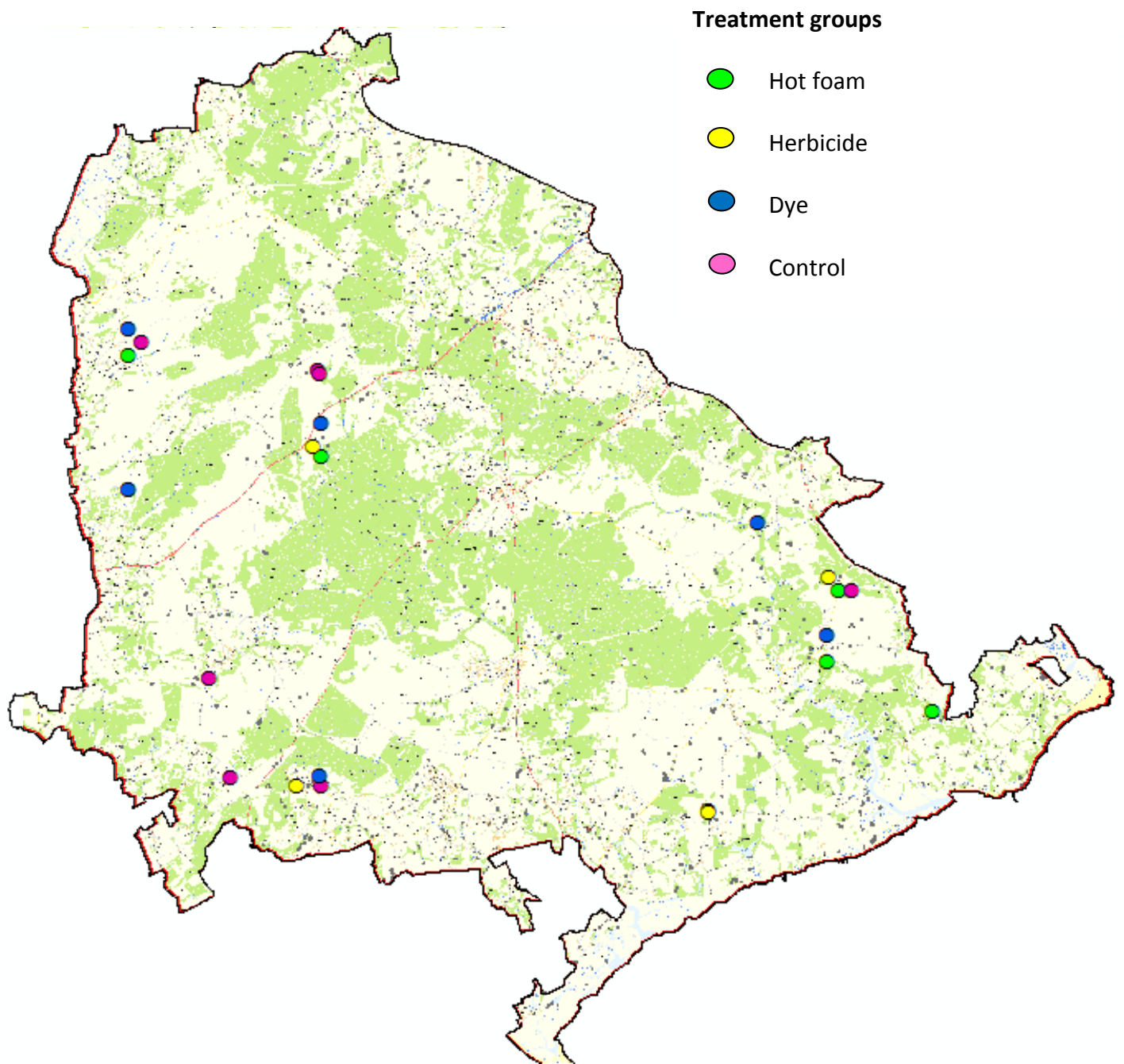
Dye Sites

1. Waterslade Farm (pond in Mr Taylor's field)	SU 17738 07793
2. Hill Top – Royal Oak	SU 40204 03137
3. Mogshade Hill Pond	SU 23968 09875
4. Ipley Pond	SU 37978 06734
5. Wootton Drinking Pond	SZ 23904 98602
6. Abbot's Well (big pond)	SU 17772 12882

Control Sites

1. Wootton Pond	SZ 23532 98707
2. Long Pond, near Burley	SU 19915 02139
3. Holmsley Gravel Pit	SZ 20622 98992
4. Beaulieu Heath (big pond west of road)	SU 40548 04950
5. Abbot's Well (small pond)	SU 17790 12901
6. Ocknell Pond – large pond	SU 23438 11979
7. Ocknell Pond – small pond	SU 23459 11879

1.2 Distribution map



Appendix 2: Photographic record of sites August 2014

2.1 Abbots Well (large pond)



2.2 Beaulieu Heath (west of road)



2.3 Blackwell Common



2.4 Hill Top – Royal Oak



2.5 Mogshade Hill (small pond)



2.6 Beaulieu Heath (east)



2.7 East End (west of road)



2.8 East End (east of road)



2.9 Canadian war memorial



2.10 Wootton woodland pond



2.11 Waterslade Farm



2.12 Mogshade Hill



2.13 Ipley



2.14 Wootton drinking pond



2.15 Wootton (large pond)



2.16 Long Pond



2.17 Holmsley



2.18 Beaulieu Heath (big pond)



2.19 Abbots Well (small pond)



2.20 Ocknell (large pond)



2.21 Ocknell (small pond)



Appendix 3: Plant records

3.1 Hot Foam Treatment

		Abbots Well large	Hill Top	Beaulieu Heath (west)	Blackwell Common	Mogshade Hill (small)
Submerged plants:						
<i>Apium inundatum</i>	Lesser Marshwort		1			
<i>Ludwigia palustris</i>	Hampshire Purslane					
<i>Ranunculus peltatus</i>	Pond Water-crowfoot					
<i>Eleogiton fluitans</i>	Floating Club-rush	1	1	1		
<i>Juncus bulbosus</i>	Bulbous Rush	1	1		1	1
<i>Littorella uniflora</i>	Shoreweed	1		1		1
<i>Myriophyllum alterniflorum</i>	Alternate Water-milfoil		1			
Floating-leaved plants:						
<i>Potamogeton polygonifolius</i>	Bog Pondweed	1	1		1	
Emergent plants:						
<i>Anagallis tenella</i>	Bog Pimpernel				1	
<i>Agrostis stolonifera</i>	Creeping Bent	1	1		1	1
<i>Alisma plantago-aquatica</i>	Water- plantain		1			
<i>Alopecurus geniculatus</i>	Marsh Foxtail	1				
<i>Baldellia ranunculoides</i>	Lesser Water-plantain					
<i>Cardamine pratensis</i>	Cuckooflower	1				
<i>Carex flacca</i>	Glaucous Sedge			1		1
<i>Carex panicea</i>	Carnation Sedge	1				
<i>Carex viridula ssp. oedocarpa</i>	Yellow-sedge ssp.			1		1
<i>Cicendia filiformis</i>	Yellow Centaury					
<i>Drosera intermedia</i>	Oblong-leaved Sundew			1		
<i>Eleocharis palustris</i>	Common Spike-rush		1	1		
<i>Epilobium sp.</i>			1			
<i>Galium constrictum</i>	Slender Marsh Bedstraw					
<i>Galium palustre</i>	Common Marsh-bedstraw	1	1	1	1	
<i>Glyceria declinata</i>	Small Sweet-grass	1	1		1	1
<i>Gnaphalium uliginosum</i>	Marsh Cudweed	1			1	
<i>Hydrocotyle vulgaris</i>	Marsh Pennywort		1	1	1	
<i>Hypericum elodes</i>	Marsh St Johns-wort				1	
<i>Illecebrum verticillatum</i>	Coral-necklace				1	1
<i>Juncus acutiflorus</i>	Sharp-flowered Rush	1				
<i>Juncus articulatus</i>	Jointed Rush					1
<i>Juncus bufonius (s.l.)</i>	Toad Rush		1			
<i>Juncus effusus</i>	Soft Rush	1				
<i>Lotus pedunculatus</i>	Greater Bird's-foot-trefoil					
<i>Lycopus europaeus</i>	Gipsywort					
<i>Lysimachia nummularia</i>	Creeping-Jenny		1			
<i>Lythrum portula</i>	Water-purslane	1	1	1	1	1
<i>Mentha aquatica</i>	Water Mint		1	1	1	
<i>Mentha pulegium</i>	Pennyroyal					
<i>Molinia caerulea</i>	Purple Moor-grass		1			
<i>Montia fontana</i>	Blinks	1				
<i>Myosotis laxa</i>	Tufted Forget-me-not					
<i>Persicaria hydropiper</i>	Water-pepper	1			1	
<i>Persicaria minor</i>	Small Water-pepper					
<i>Pilularia globulifera</i>	Pillwort			1		
<i>Potentilla erecta</i>	Tormentil		1	1	1	
<i>Ranunculus flammula</i>	Lesser Spearwort	1	1	1	1	1
<i>Ranunculus hederaceus</i>	Ivy-leaved Crowfoot	1				
<i>Ranunculus omiophyllus</i>	Round-leaved Crowfoot		1			
<i>Ranunculus xnovae-forestae</i>	New Forest Water-crowfoot		1		1	
<i>Sagina procumbens</i>	Procumbent Pearlwort					
<i>Solanum dulcamara</i>	Bittersweet	1				

		Abbots Well large	Hill Top	Beaulieu Heath (west)	Blackwell Common	Mogshade Hill (small)
<i>Veronica scutellata</i>	Marsh Speedwell					
Terrestrial Species:						
<i>Achillea millefolium</i>	Yarrow					
<i>Anagallis arvensis</i>	Scarlet Pimpernel	1				
<i>Bellis perennis</i>	Daisy	1		1		
<i>Calluna vulgaris</i>	Heather		1	1		
<i>Centunculus minimus</i>	Chaffweed				1	
<i>Cerastium arvense</i>	Field Mouse-ear	1				
<i>Chamaemelum nobile</i>	Chamomile		1			
<i>Crepis capillaris</i>	Smooth Hawks-beard	1	1			
<i>Danthonia decumbens</i>	Heath-grass		1	1	1	
<i>Erica cinerea</i>	Bell Heather	1		1	1	
<i>Leontodon autumnalis</i>	Hawkbit		1	1	1	
<i>Linum catharticum</i>	Fairy flax	1				
<i>Lotus corniculatus</i>	Bird's-foot Trefoil					
<i>Medicago lupulina</i>	Black Medic		1		1	
<i>Plantago coronopus</i>	Buck's-horn Plantain	1	1			1
<i>Plantago media</i>	Hoary Plantain	1	1			
<i>Polygala serpyllifolia</i>	Heath Milkwort		1			
<i>Polygonum aviculare</i>	Knotgrass	1	1			1
<i>Potentilla anserina</i>	Silverweed		1			1
<i>Potentilla reptans</i>	Creeping Cinquefoil		1	1	1	
<i>Prunella vulgaris</i>	Self Heal	1	1	1	1	
<i>Radiola linoides</i>	Allseed			1	1	
<i>Ranunculus repens</i>	Creeping Buttercup	1	1		1	
<i>Rumex acetosella</i>	Sheep's Sorrel	1				
<i>Rumex obtusifolius</i>	Broad-leaved Dock					
<i>Scutellaria galericulata</i>	Skull-cap					
<i>Senecio jacobaea</i>	Ragwort					
<i>Thlaspi arvense</i>	Field Penny-cress		1			
<i>Trifolium repens</i>	White clover	1	1			
<i>Veronica serpyllifolia</i>	Thyme-leaved Speedwell	1	1			
Trees and shrubs:						
<i>Salix repens</i>	Creeping Willow			1		
Total plants (no.)		33	38	22	25	13

3.2 Herbicide Treatment

		Beaulieu Heath - East	East End - west	East End - east	Canadian war memorial	Wootton wood
Submerged plants:						
<i>Apium inundatum</i>	Lesser Marshwort					
<i>Callitriche hamulata</i>	Intermediate Water-starwort			1		
<i>Eleogiton fluitans</i>	Floating Club-rush			1	1	
<i>Juncus bulbosus</i>	Bulbous Rush	1	1	1	1	
<i>Littorella uniflora</i>	Shoreweed	1	1			
<i>Ludwigia palustris</i>	Hampshire purslane					
Floating-leaved plants:						
<i>Nymphaea alba</i>	White Water-lily				1	
<i>Potamogeton polygonifolius</i>	Bog Pondweed				1	
Emergent plants:						
<i>Agrostis stolonifera</i>	Creeping Bent	1	1	1	1	1
<i>Alisma plantago-aquatica</i>	Water- plantain			1		
<i>Alopecurus geniculatus</i>	Marsh Foxtail		1	1	1	
<i>Cardamine pratensis</i>	Cuckooflower			1		
<i>Carex flacca</i>	Glaucous Sedge	1	1	1		
<i>Carex viridula ssp. oedocarpa</i>	Yellow-sedge ssp.	1	1	1	1	
<i>Cicendia filiformis</i>	Yellow Centaury		1			
<i>Epilobium sp.</i>				1		
<i>Galium constrictum</i>	Slender Marsh Bedstraw					
<i>Galium palustre</i>	Common Marsh-bedstraw		1	1		1
<i>Glyceria declinata</i>	Small Sweet-grass				1	
<i>Gnaphalium uliginosum</i>	Marsh Cudweed		1	1		
<i>Hydrocotyle vulgaris</i>	Marsh Pennywort	1	1	1	1	
<i>Hypericum elodes</i>	Marsh St Johns-wort				1	
<i>Illecebrum verticillatum</i>	Coral-necklace	1	1			
<i>Iris pseudacorus</i>	Yellow Iris				1	
<i>Juncus effusus</i>	Soft Rush				1	
<i>Lotus pedunculatus</i>	Greater Bird's-foot-trefoil			1		
<i>Lysimachia nummularia</i>	Creeping-Jenny					1
<i>Lythrum portula</i>	Water-purslane		1	1	1	1
<i>Mentha aquatica</i>	Water Mint	1				
<i>Molinia caerulea</i>	Purple Moor-grass				1	
<i>Montia fontana</i>	Blinks			1		
<i>Myosotis laxa</i>	Tufted Forget-me-not					
<i>Persicaria hydropiper</i>	Water-pepper	1	1	1		1
<i>Persicaria minor</i>	Small Water-pepper					1
<i>Potentilla erecta</i>	Tormentil	1	1	1	1	1
<i>Ranunculus flammula</i>	Lesser Spearwort	1	1	1	1	1
<i>Ranunculus hederaceus</i>	Ivy-leaved Crowfoot			1		
<i>Ranunculus omiophyllus</i>	Round-leaved Crowfoot				1	
<i>Ranunculus xnovae-forestae</i>	New Forest Water-crowfoot					
<i>Sparganium erectum</i>	Branched Bur-reed				1	
<i>Stellaria uliginosa</i>	Bog Stitchwort			1		1
Terrestrial Species:						
<i>Achillea millefolium</i>	Yarrow	1				
<i>Anagallis arvensis</i>	Scarlet Pimpernel	1				
<i>Bellis perennis</i>	Daisy	1		1		
<i>Calluna vulgaris</i>	Heather		1			
<i>Carex hirta</i>	Hairy Sedge					
<i>Carex remota</i>	Remote Sedge					1
<i>Centaureum erythraea</i>	Common Centaury	1		1		
<i>Cerastium arvense</i>	Field Mouse-ear			1		
<i>Chamaemelum nobile</i>	Chamomile		1	1		

		Beaulieu Heath - East	East End - west	East End - east	Canadian war memorial	Wootton wood
<i>Danthonia decumbens</i>	Heath-grass	1				
<i>Geum urbanum</i>	Wood Avens					1
<i>Holcus lanatus</i>	Yorkshire Fog	1		1		
<i>Leontodon autumnalis</i>	Hawkbit	1	1	1		
<i>Linum catharticum</i>	Fairy flax	1	1			
<i>Lotus corniculatus</i>	Bird's-foot Trefoil	1	1	1		
<i>Medicago lupulina</i>	Black Medic					
<i>Plantago coronopus</i>	Buck's-horn Plantain	1	1	1		
<i>Plantago media</i>	Hoary Plantain	1		1		
<i>Polygonum aviculare</i>	Knotgrass		1	1		
<i>Potentilla anserina</i>	Silverweed		1	1		1
<i>Potentilla reptans</i>	Creeping Cinquefoil		1	1	1	1
<i>Prunella vulgaris</i>	Self Heal	1	1	1		1
<i>Radiola linoides</i>	Allseed	1	1			
<i>Ranunculus repens</i>	Creeping Buttercup	1	1	1		1
<i>Rumex acetosella</i>	Sheep's Sorrel			1		
<i>Rumex obtusifolius</i>	Broad-leaved Dock			1		1
<i>Senecio jacobaea</i>	Ragwort			1		1
<i>Spergularia rubra</i>	Sand spurry		1			
<i>Trifolium repens</i>	White clover			1		
<i>Veronica serpyllifolia</i>	Thyme-leaved Speedwell		1		1	
Trees and shrubs:						
<i>Salix repens</i>	Creeping Willow	1				
Total plants (no.)		26	28	40	20	17

3.3 Dye Treatment

		Waterslade Farm	Mogshade Hill	Ipley	Wootton drinking pond
Submerged plants:					
<i>Apium inundatum</i>	Lesser Marshwort		1		1
<i>Callitriche hamulata</i>	Intermediate Water-starwort			1	
<i>Eleogiton fluitans</i>	Floating Club-rush		1		1
<i>Elodea nuttallii</i>	Nuttall's Waterweed	1			
<i>Juncus bulbosus</i>	Bulbous Rush	1	1		1
<i>Littorella uniflora</i>	Shoreweed		1		
<i>Myriophyllum alterniflorum</i>	Alternate Water-milfoil				
<i>Nitella spp.</i>					
Floating-leaved plants:					
<i>Nymphaea alba</i>	White Water-lily	1			
<i>Potamogeton polygonifolius</i>	Bog Pondweed	1		1	
Emergent plants:					
<i>Agrostis stolonifera</i>	Creeping Bent	1	1	1	1
<i>Alisma plantago-aquatica</i>	Water- plantain	1			
<i>Alopecurus geniculatus</i>	Marsh Foxtail	1	1	1	1
<i>Anagallis tenella</i>	Bog Pimpernel				1
<i>Baldellia ranunculoides</i>	Lesser Water-plantain				1
<i>Carex echinata</i>	Star Sedge				
<i>Carex flacca</i>	Glaucous Sedge			1	1
<i>Carex nigra</i>	Common Sedge				
<i>Carex viridula ssp. oedocarpa</i>	Yellow-sedge ssp.	1	1	1	1
<i>Eleocharis palustris</i>	Common Spike-rush		1		
<i>Epilobium sp.</i>		1			
<i>Galium constrictum</i>	Slender Marsh Bedstraw				1
<i>Galium palustre</i>	Common Marsh-bedstraw	1		1	1
<i>Glyceria declinata</i>	Small Sweet-grass		1	1	1
<i>Glyceria fluitans</i>	Floating Sweet-grass	1			
<i>Glyceria maxima</i>	Reed Sweet-grass				
<i>Hydrocotyle vulgaris</i>	Marsh Pennywort	1			
<i>Hypericum elodes</i>	Marsh St John's-wort	1			1
<i>Impatiens capensis</i>	Orange Balsam	1			
<i>Impatiens glandulifera</i>	Indian Balsam	1			
<i>Iris pseudacorus</i>	Yellow Iris				
<i>Juncus articulatus</i>	Jointed Rush	1			
<i>Juncus bufonius</i>	Toad Rush	1	1		1
<i>Juncus conglomeratus</i>	Compact Rush	1			
<i>Juncus effusus</i>	Soft Rush	1	1	1	
<i>Lysimachia nummularia</i>	Creeping-Jenny				
<i>Lythrum portula</i>	Water-purslane		1		1
<i>Mentha aquatica</i>	Water Mint				
<i>Molinia caerulea</i>	Purple Moor-grass				1
<i>Myosotis laxa</i>	Tufted Forget-me-not	1			
<i>Persicaria hydropiper</i>	Water-pepper	1			
<i>Persicaria minor</i>	Small Water-pepper				1
<i>Phragmites australis</i>	Common Reed				
<i>Pilularia globulifera</i>	Pillwort				1
<i>Potentilla erecta</i>	Tormentil		1		1
<i>Pulicaria dysenterica</i>	Common Fleabane				
<i>Ranunculus flammula</i>	Lesser Spearwort	1	1	1	1
<i>Ranunculus omiophyllus</i>	Round-leaved Crowfoot	1			
<i>Ranunculus xnovae-forestae</i>	New Forest Water-crowfoot				
<i>Rorippa nasturtium-aquaticum</i>	Water-cress				
<i>Sagina procumbens</i>	Procumbent Pearlwort	1			
<i>Scutellaria galericulata</i>	Skullcap				

		Waterslade Farm	Mogshade Hill	Ipley	Wootton drinking pond
<i>Sparganium erectum</i>	Branched Bur-reed	1			
<i>Stellaria uliginosa</i>	Bog Stitchwort	1		1	
<i>Typha latifolia</i>	Bulrush				
Terrestrial Species:					
<i>Bellis perennis</i>	Daisy			1	
<i>Carex remota</i>	Remote Sedge	1			
<i>Cerastium arvense</i>	Field Mouse-ear	1			
<i>Erica cinerea</i>	Bell Heather			1	
<i>Holcus lanatus</i>	Yorkshire Fog	1			
<i>Linum catharticum</i>	Fairy flax	1			
<i>Medicago lupulina</i>	Black Medic				
<i>Polygala serpyllifolia</i>	Heath Milkwort				
<i>Radiola linoides</i>	Allseed				1
<i>Senecio jacobaea</i>	Ragwort				1
<i>Thlaspi arvense</i>	Field Penny-cress				
<i>Veronica serpyllifolia</i>	Thyme-leaved Speedwell				
<i>Calluna vulgaris</i>	Heather			1	
<i>Chamaemelum nobile</i>	Chamomile			1	
<i>Crepis capillaris</i>	Smooth Hawks-beard			1	
<i>Danthonia decumbens</i>	Heath-grass			1	
<i>Lotus corniculatus</i>	Bird's-foot Trefoil	1			
<i>Plantago coronopus</i>	Buck's-horn Plantain		1		
<i>Plantago media</i>	Hoary Plantain		1		
<i>Polygonum aviculare</i>	Knotgrass		1		
<i>Potentilla anserina</i>	Silverweed				1
<i>Scutellaria galericulata</i>	Skull-cap			1	
<i>Trifolium repens</i>	White clover	1			1
<i>Leontodon autumnalis</i>	Hawkbit		1	1	1
<i>Potentilla reptans</i>	Creeping Cinquefoil		1	1	1
<i>Ranunculus repens</i>	Creeping Buttercup	1	1	1	
<i>Prunella vulgaris</i>	Self Heal	1	1	1	1
Trees and shrubs:					
<i>Salix repens</i>	Creeping Willow				1
Total plants (no.)		34	21	22	28

3.4 Control Sites

		Wootton large	Long Pond	Holmsley	Beaulieu Heath - big pond	Abbots Well small	Ocknell large pond	Ocknell small pond
Submerged plants:								
<i>Apium inundatum</i>	Lesser Marshwort		1	1	1		1	1
<i>Callitriche hamulata</i>	Intermediate Water-starwort					1		
<i>Eleogiton fluitans</i>	Floating Club-rush	1	1	1	1		1	
<i>Juncus bulbosus</i>	Bulbous Rush		1	1	1	1	1	1
<i>Littorella uniflora</i>	Shoreweed		1		1	1	1	1
<i>Myriophyllum alterniflorum</i>	Alternate Water-milfoil				1			
<i>Myriophyllum spicatum</i>	Spiked Water-milfoil			1				
<i>Potamogeton bertholdii</i>	Small Pondweed			1				
<i>Ranunculus peltatus</i>	Pond Water-crowfoot	1		1	1		1	1
Floating-leaved plants:								
<i>Nymphaea alba</i>	White Water-lily		1	1				
<i>Persicaria amphibia</i>	Amphibious Bistort			1				
<i>Potamogeton natans</i>	Broad-leaved Pondweed			1				
<i>Potamogeton polygonifolius</i>	Bog Pondweed		1	1				
Emergent plants:								
<i>Agrostis stolonifera</i>	Creeping Bent	1	1	1	1	1	1	1
<i>Alisma plantago-aquatica</i>	Water- plantain			1	1			
<i>Alopecurus geniculatus</i>	Marsh Foxtail	1	1	1	1		1	1
<i>Anagallis tenella</i>	Bog Pimpernel		1					
<i>Apium nodiflorum</i>	Fool's-water-cress			1				
<i>Baldellia ranunculoides</i>	Lesser Water-plantain		1				1	1
<i>Cardamine pratensis</i>	Cuckooflower	1				1		
<i>Carex flacca</i>	Glaucous Sedge		1	1	1		1	1
<i>Carex nigra</i>	Common Sedge						1	1
<i>Carex viridula ssp. oedocarpa</i>	Yellow-sedge ssp.		1	1	1		1	1
<i>Cirsium palustre</i>	Marsh Thistle			1				
<i>Deschampsia caespitosa</i>	Tufted Hair-grass			1				
<i>Eleocharis palustris</i>	Common Spike-rush		1	1	1			
<i>Eleocharis quinqueflora</i>	Few-flowered Spike-rush			1				
<i>Epilobium sp.</i>				1	1			
<i>Erica tetralix</i>	Cross-leaved Heath			1				
<i>Galium constrictum</i>	Slender Marsh Bedstraw		1				1	
<i>Galium palustre</i>	Common Marsh-bedstraw		1	1		1	1	1
<i>Glyceria declinata</i>	Small Sweet-grass		1		1	1	1	
<i>Glyceria fluitans</i>	Floating Sweet-grass			1				
<i>Gnaphalium uliginosum</i>	Marsh Cudweed				1		1	1
<i>Hydrocotyle vulgaris</i>	Marsh Pennywort				1		1	
<i>Hypericum elodes</i>	Marsh St John's-wort		1				1	
<i>Illecebrum verticillatum</i>	Coral-necklace				1			
<i>Iris pseudacorus</i>	Yellow Iris	1		1	1			
<i>Juncus bufonius</i>	Toad Rush				1			
<i>Juncus conglomeratus</i>	Compact Rush			1				
<i>Juncus effusus</i>	Soft Rush			1				
<i>Juncus inflexus</i>	Hard Rush			1				
<i>Lotus pedunculatus</i>	Greater Bird's-foot-trefoil			1			1	
<i>Lycopus europaeus</i>	Gipsywort			1				
<i>Lythrum portula</i>	Water-purslane	1		1		1	1	1
<i>Lysimachia nummularia</i>	Creeping-Jenny	1				1		
<i>Lysimachia vulgaris</i>	Yellow Loosestrife			1				
<i>Mentha aquatica</i>	Water Mint			1			1	1

		Wootton large	Long Pond	Holmsley	Beaulieu Heath - big pond	Abbots Well small	Ocknell large pond	Ocknell small pond
<i>Molinia caerulea</i>	Purple Moor-grass		1	1	1		1	
<i>Myosotis laxa</i>	Tufted Forget-me-not		1	1				
<i>Persicaria hydropiper</i>	Water-pepper	1			1	1	1	1
<i>Persicaria minor</i>	Small Water-pepper						1	
<i>Pilularia globulifera</i>	Pillwort		1	1			1	
<i>Potentilla erecta</i>	Tormentil				1		1	1
<i>Pulicaria vulgaris</i>	Small Fleabane			1				
<i>Ranunculus flammula</i>	Lesser Spearwort	1	1	1	1	1	1	1
<i>Rorippa nasturtium-aquaticum</i>	Water-cress			1				
<i>Sagina procumbens</i>	Procumbent Pearlwort				1		1	1
<i>Stellaria uliginosa</i>	Bog Stitchwort		1				1	
<i>Typha angustifolia</i>	Lesser Bulrush			1				
<i>Typha latifolia</i>	Bulrush			1				
<i>Veronica beccabunga</i>	Brooklime			1				
<i>Veronica scutellata</i>	Marsh Speedwell			1				
Terrestrial Species:								
<i>Achillea millefolium</i>	Yarrow			1				
<i>Anagallis arvensis</i>	Scarlet Pimpernel			1				
<i>Bellis perennis</i>	Daisy		1	1	1	1		
<i>Calluna vulgaris</i>	Heather		1	1	1			
<i>Carex hirta</i>	Hairy Sedge			1				
<i>Carex leporina</i>	Oval Sedge						1	
<i>Carex remota</i>	Remote Sedge	1						
<i>Centaureum erythraea</i>	Common Centaury			1			1	1
<i>Centunculus minimus</i>	Chaffweed						1	
<i>Cerastium arvense</i>	Field Mouse-ear			1				
<i>Chamaemelum nobile</i>	Chamomile				1		1	1
<i>Crepis capillaris</i>	Smooth Hawks-beard		1	1				
<i>Danthonia decumbens</i>	Heath-grass		1		1		1	1
<i>Erica cinerea</i>	Bell Heather				1			
<i>Holcus lanatus</i>	Yorkshire Fog			1				
<i>Leontodon autumnalis</i>	Hawkbit				1		1	1
<i>Linum catharticum</i>	Fairy flax			1				
<i>Lotus corniculatus</i>	Bird's-foot Trefoil			1				1
<i>Medicago lupulina</i>	Black Medic			1		1		
<i>Plantago coronopus</i>	Buck's-horn Plantain		1	1				
<i>Plantago media</i>	Hoary Plantain	1			1		1	1
<i>Polygonum aviculare</i>	Knotgrass	1			1	1		
<i>Potentilla anserina</i>	Silverweed			1				
<i>Potentilla reptans</i>	Creeping Cinquefoil		1	1	1		1	1
<i>Prunella vulgaris</i>	Self Heal		1	1	1	1	1	1
<i>Radiola linoides</i>	Allseed				1			
<i>Ranunculus repens</i>	Creeping Buttercup	1	1	1	1	1	1	1
<i>Rumex obtusifolius</i>	Broad-leaved Dock	1		1		1		1
<i>Scutellaria galericulata</i>	Skull-cap				1		1	
<i>Senecio jacobaea</i>	Ragwort			1				
<i>Spergularia rubra</i>	Sand spurry							
<i>Trifolium repens</i>	White clover				1	1	1	1
<i>Veronica serpyllifolia</i>	Thyme-leaved Speedwell			1	1	1	1	1
Trees and shrubs:								
<i>Salix repens</i>	Creeping Willow		1					
<i>Salix caprea</i>	Goat Willow	1		1				
Total plants (no.)		16	31	64	39	19	41	30

Appendix 4: Macroinvertebrate records

4.1 Hot Foam and Herbicide Treatment

Order	Family	Species	Abbots Well large	Hill Top	Blackwell Common	Beaulieu Heath - east	East End - west	East End - east	Canadian war memorial
Alderflies	Sialidae	<i>Sialis lutaria</i>							1
Beetles	Dytiscidae	<i>Acilius sulcatus</i>	1				1		1
Beetles	Dytiscidae	<i>Agabus bipustulatus</i>	1	1			1		1
Beetles	Dytiscidae	<i>Agabus labiatus</i>							
Beetles	Dytiscidae	<i>Agabus nebulosus</i>							
Beetles	Dytiscidae	<i>Coelambus confluens</i>							
Beetles	Dytiscidae	<i>Coelambus impressopunctatus</i>							1
Beetles	Dytiscidae	<i>Colymbetes fuscus</i>	1						1
Beetles	Dytiscidae	<i>Dytiscus semisulcatus</i>		1				1	1
Beetles	Dytiscidae	<i>Graptodytes flavipes</i>			1				
Beetles	Dytiscidae	<i>Hydroporus angustatus</i>							
Beetles	Dytiscidae	<i>Hydroporus erythrocephalus</i>							1
Beetles	Dytiscidae	<i>Hydroporus gyllenhali</i>	1	1	1		1	1	1
Beetles	Dytiscidae	<i>Hydroporus memnonius</i>							
Beetles	Dytiscidae	<i>Hydroporus nigrita</i>			1				1
Beetles	Dytiscidae	<i>Hydroporus palustris</i>	1	1	1				
Beetles	Dytiscidae	<i>Hydroporus planus</i>			1			1	
Beetles	Dytiscidae	<i>Hydroporus pubescens</i>		1		1	1	1	1
Beetles	Dytiscidae	<i>Hygrotus inaequalis</i>	1						
Beetles	Dytiscidae	<i>Hygrotus impressopunctatus</i>	1						
Beetles	Dytiscidae	<i>Hyphydrus ovatus</i>							
Beetles	Dytiscidae	<i>Ilybius ater</i>							1
Beetles	Dytiscidae	<i>Ilybius chalconatus</i>		1					
Beetles	Dytiscidae	<i>Liopterus haemorrhoidalis</i>							
Beetles	Dytiscidae	<i>Rhantus suturalis</i>							
Beetles	Gyrinidae	<i>Gyrinus substriatus</i>	1	1					
Beetles	Haliplidae	<i>Halipus ruficollis</i>	1			1			1
Beetles	Hydraenidae	<i>Hydraena testacea</i>							1
Beetles	Hydrophilidae	<i>Anacaena bipustulata</i>							
Beetles	Hydrophilidae	<i>Anacaena lutescens</i>	1	1	1	1	1	1	1
Beetles	Hydrophilidae	<i>Berosus signaticollis</i>	1			1			
Beetles	Hydrophilidae	<i>Berosus affinis</i>	1						
Beetles	Hydrophilidae	<i>Coelostoma orbiculare</i>							1
Beetles	Hydrophilidae	<i>Helochares punctatus</i>		1	1		1		
Beetles	Hydrophilidae	<i>Helophorus aequalis</i>			1				
Beetles	Hydrophilidae	<i>Helophorus brevipalpis</i>				1	1		
Beetles	Hydrophilidae	<i>Helophorus flavipes</i>	1	1	1	1	1	1	1
Beetles	Hydrophilidae	<i>Helophorus grandis</i>			1				1
Beetles	Hydrophilidae	<i>Helophorus minutus</i>	1						
Beetles	Hydrophilidae	<i>Hydrobius fuscipes</i>	1						
Beetles	Hydrophilidae	<i>Hydrochus angustatus</i>			1				1
Beetles	Hydrophilidae	<i>Paracymus scutellaris</i>	1						
Beetles	Hygrobiiidae	<i>Hygrobia hermanni</i>							
Beetles	Noteridae	<i>Noterus clavicornis</i>		1	1	1	1	1	
Bugs	Corixidae	<i>Corixa punctata</i>		1				1	

Order	Family	Species	Abbots Well large	Hill Top	Blackwell Common	Beaulieu Heath - east	East End - west	East End - east	Canadian war memorial
Bugs	Corixidae	<i>Hesperocorixa castanea</i>					1	1	
Bugs	Corixidae	<i>Hesperocorixa moesta</i>				1			
Bugs	Corixidae	<i>Hesperocorixa linnaei</i>			1				
Bugs	Corixidae	<i>Hesperocorixa sahlbergi</i>	1	1	1				
Bugs	Corixidae	<i>Sigara lateralis</i>			1			1	
Bugs	Corixidae	<i>Sigara limitata</i>	1						
Bugs	Corixidae	<i>Sigara nigrolineata</i>	1	1		1			
Bugs	Gerridae	<i>Gerris lacustris</i>	1	1					
Bugs	Hydrometridae	<i>Hydrometra stagnorum</i>		1					
Bugs	Naucoridae	<i>Ilyocoris cimicoides</i>							
Bugs	Nepidae	<i>Nepa cinerea</i>							
Bugs	Notonectidae	<i>Notonecta obliqua</i>	1	1		1	1	1	
Bugs	Notonectidae	<i>Notonecta viridis</i>							
Bugs	Pleidae	<i>Plea minutissima</i>							
Bugs	Veliidae	<i>Microvelia reticulata</i>							1
Caddisflies	Limnephilidae	<i>Glyphotaelius pellucidus</i>							1
Caddisflies	Limnephilidae	<i>Limnephilus centralis</i>	1			1			1
Caddisflies	Limnephilidae	<i>Limnephilus vittatus</i>			1		1		
Flatworm	Planariidae	<i>Polycelis nigra</i>	1	1					1
Leeches	Erpoddellidae	<i>Erpobdella octocultata</i>							1
Leeches	Glossiphoniidae	<i>Glossiphonia complanata</i>							
Mayflies	Baetidae	<i>Cloeon dipterum</i>	1	1	1	1	1	1	1
Dragonflies	Aeshnidae	<i>Anax imperator</i>	1						1
Dragonflies	Coenagriidae	<i>Coenagrion puella</i>							1
Dragonflies	Coenagriidae	<i>Enallagma cyathigerum</i>							
Dragonflies	Coenagriidae	<i>Pyrrhosoma nymphula</i>		1					1
Dragonflies	Libellulidae	<i>Libellula depressa</i>							
Dragonflies	Libellulidae	<i>Sympetrum striolatum</i>	1	1			1		1
Crayfish	Astacidae	<i>Pacifastacus leniusculus</i>							
Shrimps	Crangonyctidae	<i>Crangonyx pseudogracilis</i>							1
Slaters	Asellidae	<i>Asellus meridianus</i>							1
Snails	Hydrobiidae	<i>Potamopyrgus antipodarum</i>	1						
Snails	Lymnaeidae	<i>Radix peregra</i>	1						
Snails	Lymnaeidae	<i>Galba truncatula</i>			1				
Snails	Lymnaeidae	<i>Lymnaea stagnalis</i>							
Snails	Planorbidae	<i>Anisus leucostoma</i>	1						
Bivalves	Sphaeriidae	<i>Pisidium personatum</i>	1	1	1				
TOTAL			30	22	19	12	14	12	30

4.2 Dye Treatment

Order	Family	Species	Waterslade Farm	Mogshade Hill large	Ipley	Wootton drinking pond
Alderflies	Sialidae	<i>Sialis lutaria</i>			1	
Beetles	Dytiscidae	<i>Acilius sulcatus</i>				
Beetles	Dytiscidae	<i>Agabus bipustulatus</i>	1		1	1
Beetles	Dytiscidae	<i>Agabus labiatus</i>				
Beetles	Dytiscidae	<i>Agabus nebulosus</i>				
Beetles	Dytiscidae	<i>Coelambus confluens</i>				
Beetles	Dytiscidae	<i>Coelambus impressopunctatus</i>				1
Beetles	Dytiscidae	<i>Colymbetes fuscus</i>				
Beetles	Dytiscidae	<i>Dytiscus semisulcatus</i>	1			1
Beetles	Dytiscidae	<i>Graptodytes flavipes</i>				
Beetles	Dytiscidae	<i>Hydroporus angustatus</i>		1		1
Beetles	Dytiscidae	<i>Hydroporus erythrocephalus</i>				
Beetles	Dytiscidae	<i>Hydroporus gyllenhali</i>	1			
Beetles	Dytiscidae	<i>Hydroporus memnonius</i>				
Beetles	Dytiscidae	<i>Hydroporus nigrita</i>			1	
Beetles	Dytiscidae	<i>Hydroporus palustris</i>		1		
Beetles	Dytiscidae	<i>Hydroporus planus</i>				
Beetles	Dytiscidae	<i>Hydroporus pubescens</i>	1		1	1
Beetles	Dytiscidae	<i>Hygrotus inaequalis</i>	1			
Beetles	Dytiscidae	<i>Hygrotus impressopunctatus</i>		1		
Beetles	Dytiscidae	<i>Hyphydrus ovatus</i>	1			1
Beetles	Dytiscidae	<i>Ilybius ater</i>				
Beetles	Dytiscidae	<i>Ilybius chalconatus</i>				
Beetles	Dytiscidae	<i>Liopterus haemorrhoidalis</i>	1			
Beetles	Dytiscidae	<i>Rhantus suturalis</i>				
Beetles	Gyrinidae	<i>Gyrinus substriatus</i>			1	
Beetles	Haliplidae	<i>Haliplus ruficollis</i>	1			1
Beetles	Hydraenidae	<i>Hydraena testacea</i>				
Beetles	Hydrophilidae	<i>Anacaena bipustulata</i>	1			
Beetles	Hydrophilidae	<i>Anacaena lutescens</i>	1	1	1	1
Beetles	Hydrophilidae	<i>Berosus signaticollis</i>	1			1
Beetles	Hydrophilidae	<i>Berosus affinis</i>		1		
Beetles	Hydrophilidae	<i>Coelostoma orbiculare</i>				
Beetles	Hydrophilidae	<i>Helochaeres punctatus</i>		1		
Beetles	Hydrophilidae	<i>Helophorus aequalis</i>				
Beetles	Hydrophilidae	<i>Helophorus brevivalpis</i>	1			
Beetles	Hydrophilidae	<i>Helophorus flavipes</i>	1	1		1
Beetles	Hydrophilidae	<i>Helophorus grandis</i>	1			
Beetles	Hydrophilidae	<i>Helophorus minutus</i>		1		
Beetles	Hydrophilidae	<i>Hydrobius fuscipes</i>		1		
Beetles	Hydrophilidae	<i>Hydrochus angustatus</i>				
Beetles	Hydrophilidae	<i>Paracymus scutellaris</i>				
Beetles	Hygrobiidae	<i>Hygrobia hermanni</i>	1			
Beetles	Noteridae	<i>Noterus clavicornis</i>	1		1	1
Bugs	Corixidae	<i>Corixa punctata</i>	1		1	
Bugs	Corixidae	<i>Hesperocorixa castanea</i>				
Bugs	Corixidae	<i>Hesperocorixa moesta</i>				
Bugs	Corixidae	<i>Hesperocorixa linnaei</i>				
Bugs	Corixidae	<i>Hesperocorixa sahlbergi</i>			1	

Order	Family	Species	Waterslade Farm	Mogshade Hill large	Ipley	Wootton drinking pond
Bugs	Corixidae	<i>Sigara lateralis</i>		1		
Bugs	Corixidae	<i>Sigara limitata</i>				
Bugs	Corixidae	<i>Sigara nigrolineata</i>	1	1		1
Bugs	Gerridae	<i>Gerris lacustris</i>	1	1		
Bugs	Hydrometridae	<i>Hydrometra stagnorum</i>		1		
Bugs	Naucoridae	<i>Ilyocoris cimicoides</i>				
Bugs	Nepidae	<i>Nepa cinerea</i>				
Bugs	Notonectidae	<i>Notonecta obliqua</i>	1	1		1
Bugs	Notonectidae	<i>Notonecta viridis</i>				
Bugs	Pleidae	<i>Plea minutissima</i>				
Bugs	Veliidae	<i>Microvelia reticulata</i>				
Caddisflies	Limnephilidae	<i>Glyphotaenius pellucidus</i>				
Caddisflies	Limnephilidae	<i>Limnephilus centralis</i>	1			1
Caddisflies	Limnephilidae	<i>Limnephilus vittatus</i>			1	
Flatworm	Planariidae	<i>Polycelis nigra</i>	1	1		
Leeches	Erpoddellidae	<i>Erpobdella octocultata</i>				
Leeches	Glossiphoniidae	<i>Glossiphonia complanata</i>				
Mayflies	Baetidae	<i>Cloeon dipterum</i>	1	1	1	1
Dragonflies	Aeshnidae	<i>Anax imperator</i>	1			
Dragonflies	Coenagriidae	<i>Coenagrion puella</i>				
Dragonflies	Coenagriidae	<i>Enallagma cyathigerum</i>				
Dragonflies	Coenagriidae	<i>Pyrrhosoma nymphula</i>		1		
Dragonflies	Libellulidae	<i>Libellula depressa</i>				
Dragonflies	Libellulidae	<i>Sympetrum striolatum</i>	1	1		
Crayfish	Astacidae	<i>Pacifastacus leniusculus</i>				
Shrimps	Crangonyctidae	<i>Crangonyx pseudogracilis</i>				
Slaters	Asellidae	<i>Asellus meridianus</i>				
Snails	Hydrobiidae	<i>Potamopyrgus antipodarum</i>	1			
Snails	Lymnaeidae	<i>Radix peregra</i>	1			
Snails	Lymnaeidae	<i>Galba truncatula</i>			1	
Snails	Lymnaeidae	<i>Lymnaea stagnalis</i>				
Snails	Planorbidae	<i>Anisus leucostoma</i>	1			
Bivalves	Sphaeriidae	<i>Pisidium personatum</i>	1	1	1	
TOTAL			31	15	18	20

4.3 Control Sites

Order	Family	Species	Wootton large	Long Pond	Holmsley	Beaulieu Heath Big pond	Ocknell large	Ocknell small
Alderflies	Sialidae	<i>Sialis lutaria</i>	1					
Beetles	Dytiscidae	<i>Acilius sulcatus</i>	1		1			
Beetles	Dytiscidae	<i>Agabus bipustulatus</i>	1	1	1			
Beetles	Dytiscidae	<i>Agabus labiatus</i>					1	1
Beetles	Dytiscidae	<i>Agabus nebulosus</i>					1	
Beetles	Dytiscidae	<i>Coelambus confluens</i>			1	1		
Beetles	Dytiscidae	<i>Coelambus impressopunctatus</i>			1			
Beetles	Dytiscidae	<i>Colymbetes fuscus</i>	1	1		1		
Beetles	Dytiscidae	<i>Dytiscus semisulcatus</i>				1	1	
Beetles	Dytiscidae	<i>Graptodytes flavipes</i>					1	1
Beetles	Dytiscidae	<i>Hydroporus angustatus</i>			1			
Beetles	Dytiscidae	<i>Hydroporus erythrocephalus</i>						
Beetles	Dytiscidae	<i>Hydroporus gyllenhalii</i>	1	1	1	1		
Beetles	Dytiscidae	<i>Hydroporus memnonius</i>	1					
Beetles	Dytiscidae	<i>Hydroporus nigrita</i>	1		1			
Beetles	Dytiscidae	<i>Hydroporus palustris</i>	1		1			
Beetles	Dytiscidae	<i>Hydroporus planus</i>						
Beetles	Dytiscidae	<i>Hydroporus pubescens</i>	1	1	1	1	1	1
Beetles	Dytiscidae	<i>Hygrotus inaequalis</i>		1	1			
Beetles	Dytiscidae	<i>Hygrotus impressopunctatus</i>						
Beetles	Dytiscidae	<i>Hyphydrus ovatus</i>			1			
Beetles	Dytiscidae	<i>Ilybius ater</i>						
Beetles	Dytiscidae	<i>Ilybius chalconatus</i>					1	
Beetles	Dytiscidae	<i>Liopterus haemorrhoidalis</i>			1			
Beetles	Dytiscidae	<i>Rhantus suturalis</i>		1				
Beetles	Gyrinidae	<i>Gyrinus substriatus</i>				1	1	
Beetles	Halipidae	<i>Haliplus ruficollis</i>	1	1	1		1	1
Beetles	Hydraenidae	<i>Hydraena testacea</i>						
Beetles	Hydrophilidae	<i>Anacaena bipustulata</i>	1					
Beetles	Hydrophilidae	<i>Anacaena lutescens</i>	1	1	1	1	1	1
Beetles	Hydrophilidae	<i>Berosus signaticollis</i>						
Beetles	Hydrophilidae	<i>Berosus affinis</i>						
Beetles	Hydrophilidae	<i>Coelostoma orbiculare</i>	1					
Beetles	Hydrophilidae	<i>Helochares punctatus</i>	1	1	1		1	
Beetles	Hydrophilidae	<i>Helophorus aequalis</i>						
Beetles	Hydrophilidae	<i>Helophorus brevipalpis</i>					1	
Beetles	Hydrophilidae	<i>Helophorus flavipes</i>	1	1	1	1	1	1
Beetles	Hydrophilidae	<i>Helophorus grandis</i>						
Beetles	Hydrophilidae	<i>Helophorus minutus</i>						
Beetles	Hydrophilidae	<i>Hydrobius fuscipes</i>	1		1	1		
Beetles	Hydrophilidae	<i>Hydrochus angustatus</i>						
Beetles	Hydrophilidae	<i>Paracymus scutellaris</i>		1				
Beetles	Hygrobiidae	<i>Hygrobia hermanni</i>	1	1	1			
Beetles	Noteridae	<i>Noterus clavicornis</i>	1	1	1			
Bugs	Corixidae	<i>Corixa punctata</i>			1		1	
Bugs	Corixidae	<i>Hesperocorixa castanea</i>				1		
Bugs	Corixidae	<i>Hesperocorixa moesta</i>		1				

Order	Family	Species	Wootton large	Long Pond	Holmsley	Beaulieu Heath Big pond	Ocknell large	Ocknell small
Bugs	Corixidae	<i>Hesperocorixa linnaei</i>			1			
Bugs	Corixidae	<i>Hesperocorixa sahlbergi</i>		1	1	1		
Bugs	Corixidae	<i>Sigara lateralis</i>		1				1
Bugs	Corixidae	<i>Sigara limitata</i>					1	
Bugs	Corixidae	<i>Sigara nigrolineata</i>		1	1	1	1	
Bugs	Gerridae	<i>Gerris lacustris</i>	1		1	1	1	
Bugs	Hydrometridae	<i>Hydrometra stagnorum</i>	1	1	1	1	1	
Bugs	Naucoridae	<i>Ilyocoris cimicoides</i>	1	1				
Bugs	Nepidae	<i>Nepa cinerea</i>	1	1	1			
Bugs	Notonectidae	<i>Notonecta obliqua</i>	1	1	1	1	1	1
Bugs	Notonectidae	<i>Notonecta viridis</i>	1			1		
Bugs	Pleidae	<i>Plea minutissima</i>	1					
Bugs	Veliidae	<i>Microvelia reticulata</i>						
Caddisflies	Limnephilidae	<i>Glyptotaelius pellucidus</i>			1			
Caddisflies	Limnephilidae	<i>Limnephilus centralis</i>		1	1		1	
Caddisflies	Limnephilidae	<i>Limnephilus vittatus</i>						
Flatworm	Planariidae	<i>Polycelis nigra</i>		1	1			
Leeches	Erpoddellidae	<i>Erpobdella octocultata</i>						
Leeches	Glossiphoniidae	<i>Glossiphonia complanata</i>			1			
Mayflies	Baetidae	<i>Cloeon dipterum</i>	1	1	1	1	1	1
Dragonflies	Aeshnidae	<i>Anax imperator</i>			1			
Dragonflies	Coenagriidae	<i>Coenagrion puella</i>	1	1	1	1	1	
Dragonflies	Coenagriidae	<i>Enallagma cyathigerum</i>	1	1				
Dragonflies	Coenagriidae	<i>Pyrrhosoma nymphula</i>	1	1	1	1		
Dragonflies	Libellulidae	<i>Libellula depressa</i>	1	1	1			
Dragonflies	Libellulidae	<i>Sympetrum striolatum</i>	1	1	1	1	1	
Crayfish	Astacidae	<i>Pacifastacus leniusculus</i>			1			
Shrimps	Crangonyctidae	<i>Crangonyx pseudogracilis</i>		1	1			
Slaters	Asellidae	<i>Asellus meridianus</i>	1	1	1			
Snails	Hydrobiidae	<i>Potamopyrgus antipodarum</i>						
Snails	Lymnaeidae	<i>Radix peregra</i>		1		1		
Snails	Lymnaeidae	<i>Galba truncatula</i>		1		1		
Snails	Lymnaeidae	<i>Lymnaea stagnalis</i>						
Snails	Planorbidae	<i>Anisus leucostoma</i>			1	1		
Bivalves	Sphaeriidae	<i>Pisidium personatum</i>	1		1			
TOTAL			33	33	42	23	22	9